

## Weekly Update

# Milltown Reservoir Sediments Superfund Site

Issue #2

January 30, 2007

### For More Information:

Russ Forba, EPA

457-5042

[forba.russ@epa.gov](mailto:forba.russ@epa.gov)

Diana Hammer, EPA

457-5040

[hammer.diana@epa.gov](mailto:hammer.diana@epa.gov)

Keith Large, MT DEQ

841-5039

[klarge@mt.gov](mailto:klarge@mt.gov)

Doug Martin, MT NRDP

444-0234

[dmartin@mt.gov](mailto:dmartin@mt.gov)

Peter Nielsen, Missoula Co.

258-4968

[NielsenP@ho.missoula.mt.us](mailto:NielsenP@ho.missoula.mt.us)

### Websites:

<http://www.epa.gov/region8/superfund/sites/mt/milltowncfr/home.html>

<http://www.cfrtac.org>

These weekly updates are intended to provide you with the latest information about remediation, restoration and redevelopment activities at the Milltown Reservoir.

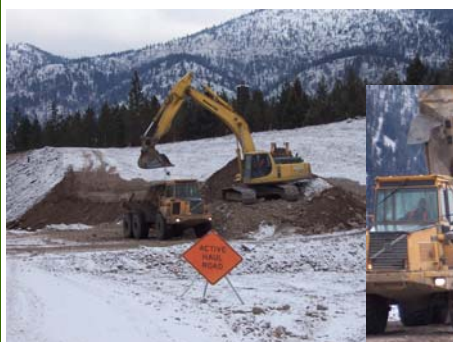
The Milltown Reservoir cleanup project is going well and is on schedule. There is much to be accomplished to meet the goal of dam removal next spring!

On site, workers are busy on-site constructing roads to haul excavated sediment and are building a temporary flood berm around the 40,000 cubic yards excavated from the dewatering test pit. The flood berm will protect these sediments in case of an early spring high flow. The rail road loading pad for these sediments was also completed.

Construction of the flood berm along the Clark Fork River will begin once brush is cleared and the area prepared. This berm will prevent contaminated sediments from washing away during high flows this spring. Once the Clark Fork River berm is complete, the temporary, interior flood berm will be removed. Construction of the flood berm on the Blackfoot River side of the project area is expected to begin in February. All flood berms will be complete by April 1, 2007.

Air monitoring for lead, copper and arsenic has begun. Results will be reported in next week's update. No problems from exposure to dust are anticipated.

Site monitoring data available at:  
<ftp://milltown.envirocon.com>



Loading stockpiled material for temporary, interior berm construction



Placing berm material in 12" layers



Compacting the berm

## Flood Berm Construction



US EPA Montana Office  
10 W. 15th St., Ste. 3200  
Helena, Montana 59626

## Upcoming Meetings

- Feb. 15, 2007 4-7 pm in the Bonner School Gym Missoula County will host an Open House to discuss designs for pedestrian trail along Hwy 210 E from Bonner School to Piltzville
- Meeting re: Hwy 200 Bridge—Date TBD
- Feb. 27, 2007 10 am Health & Safety Mtg. Piltzville Fire Station
- Feb. 27, 2007 6:30 pm Milltown Redevelopment Working Group at the Lutheran Church in Bonner

## Pedestrian Trail along Hwy 210 E

An important aspect of this project is safety — for workers on the construction site and residents around the project area. The area along State Highway 210 East is used regularly as a walking path for adults as well as for children from Rustic Road to the Bonner School. This is also one of the routes to bring material and workers onto the project site.



For these safety reasons, EPA has provided Missoula County with \$500,000 to construct a dedicated pedestrian trail along Highway 210 E. This will allow adults and children to continue to safely use and enjoy this route during project construction.

Missoula County will hold an open house to discuss possible design options with area residents (see box at left for details). The County expects to complete the trail by August 1, 2007. The goal is to have the trail done before construction of the rail spur and rail hauling of test pit sediments begins in September 2007.

## Milltown Project Schedule

2007	<b>Build haul roads</b> <b>Build flood berms</b> <b>Bridge mitigation</b> <b>Build bypass channel</b> <b>Build pedestrian trail</b> <b>Construct rail lines</b> <b>Begin rail hauling</b>
2008	<b>Stage 2 drawdown</b> <b>Build coffer dam</b> <b>Diversion of CFR</b> <b>Spillway removal</b> <b>Sediment removal</b> <b>Rail hauling sediment</b> <b>Restoration</b> <b>Redevelopment</b>
2009	<b>Sediment removal</b> <b>Rail hauling sediment</b> <b>Restoration</b> <b>Redevelopment</b>
2010	<b>Restoration</b> <b>Redevelopment</b>
2011	<b>Restoration</b> <b>Redevelopment</b>



## Community Involvement Update

- Community Information Office is now open! It is located near the Milltown Market at 315 Anaconda in Milltown. EPA staff will be available to meet with the public every Tuesday from noon until 3:30 pm. Stop by to talk, ask questions or to simply say “hi!”
- EPA is finalizing details with the Montana Department of Transportation and the US Army Corps of Engineers (USACE) to install a web cam at the Milltown Project Site. With this web cam, the public will be able to view site activities 24/7 beginning this spring.
- EPA is also designing informational “kiosks” to be displayed at various locations. These informational kiosks will describe the cleanup project, its goals, schedule and current activities. These kiosks will be installed this spring.
- EPA and Plum Creek have agreed in principle and are now working an access agreement for a public viewing area on the bluff overlooking the confluence of the Clark Fork and Blackfoot Rivers. Construction of the viewing area is scheduled to begin in April 2007.

## SAFETY WARNING!

Uneven ice on the Blackfoot River means unsafe — yes, dangerous — ice conditions. Signs are being posted.

Please remind family and friends to stay off the ice and out of the areas closed to the public during the Milltown Reservoir cleanup.

Thank you! Be safe!