

Weekly Update

Milltown Reservoir Sediments Superfund Site

Issue #34

Oct. 17, 2007

For More Information:

Russ Forba, EPA
457-5042
forba.russ@epa.gov

Diana Hammer, EPA
457-5040
hammer.diana@epa.gov

Keith Large, MT DEQ
841-5039
klarge@mt.gov

Doug Martin, MT NRDP
444-0234
dmartin@mt.gov

Peter Nielsen, Missoula Co.
258-4968
NielsenP@ho.missoula.mt.us

Websites:
[http://www.epa.gov/
region8/superfund/sites/
mt/milltown](http://www.epa.gov/region8/superfund/sites/mt/milltown)

<http://www.cfrtac.org>

Milltown Reservoir Community Office

(315 Anaconda St., Milltown, MT)

Office hours:
Tuesdays 12:30-3:30 pm
EPA and DEQ staff are available.
Stop by to talk
or just say hi!

These weekly updates are intended to provide you with the latest information about remediation, restoration and redevelopment activities at the Milltown Reservoir.

Status: The Milltown Reservoir cleanup project is going well and is on schedule for powerhouse removal in late 2007 or early 2008 (before spring flow). To date, project personnel have worked 77,509 hours without any time lost to injury.

Currently:

- Continue loading rail cars with excavated sediment for transportation — by rail — to the BP-ARCo repository at the Anaconda Smelter Superfund Site. This week the train will have 45 cars, each carrying approximately 100 tons of sediment (70 cubic yards). The hauling schedule remains the same: a loaded train goes to the repository each day and an empty train returns to the Milltown Reservoir Site. On Monday, 10/22, the trains will be hauling sediments 7 days per week. Over the next 2 years, the trains will haul 2.2 million cubic yards (yd³) of contaminated sediments from the Milltown Reservoir Sediments Superfund Site, leading to a restored aquifer and fishery.
- Excavation of the **bypass channel is essentially complete**. Last week, workers removed 3,000 yd³ of sediments, bringing the total volume removed to 563,000 yd³. Excavated sediment continues to be stockpiled before it is hauled off site by rail. As soon vehicles can travel over the **rail bridge**, workers will remove the remaining land bridge linking the north and south sides of the Site. Once that is removed, the rail bridge will be the only access across the bypass channel.
- Continue to work on the **Bypass Channel Berm**, mixing native alluvium (rockier soils) with original topsoils. The berm is about 60% complete; should be done by the end of November. The berm is built using clean materials so when the cleanup is complete, these berm materials will be used to re-configure the area into a more natural Clark Fork River flood plain.
- Workers are busy lining the bypass channel with "**reno mattresses**," and are about 33% complete; installation should be done by the end of November. **Trucks continue to haul rock** to fill the "reno mattresses" for the bypass channel. The number of trucks is between 10-18 truckloads per day. Trucks are traveling on Highway 200 through Milltown and then on Hwy 210 E to the Rustic Road entrance. Rock hauling should be done by the end of October.
- **Twenty five dewatering wells** are producing 3275 gallons per minute (gpm), of which, 2635 gpm are discharged into the Clark Fork River, 210 gpm are discharged to the Blackfoot River directly and 430 gpm are discharged to the Blackfoot River via the **Sedimentation Pond**.
- US Army Corps of Engineers (USACE) completed **jet-grouting** on the east side of the Blackfoot River and will finish jet-grouting the west side by the end of October 2007.
- USACE and its contractors continue to work to strengthen and stabilize the **I-90 bridge center piers**. Work has been going slowly as crews have encountered remnants of an earlier coffer dam (including 16" I-beams) while installing the bridge supports. I-90 Bridge mitigation should be complete in January 2008.



US EPA Montana Office
10 W. 15th St., Ste. 3200
Helena, Montana 59626
1-800-457-2690

Upcoming Meetings

- **Tuesday, October 23**
Milltown Reservoir
Redevelopment Group
monthly mtg., 6:30—
9:00 pm at Our Sav-
ior's Lutheran Church
- **Thursday, October 25**
7 pm at St. Ann's
Church in Bonner and
- **Monday, October 29**
7 pm at the Missoula
Public Library, in the
large meeting room
Milltown Redevel-
opment Working Group
hosts a Discussion and
Open House about the
draft **Public Park and
Open Space** designs
for the Milltown Area.
Please come and share
your thoughts!

Upcoming work:

- Continue bypass channel excavation
- Continue bypass channel berm construction
- Continue reno mattress installation
- USACE continues I-90 bridge stabilization work
- Continue hauling rock for the "reno mattresses" to line the bypass channel; through October.
- Continue to remove equipment and other items of historic value from the Powerhouse. These items will be stored for future use in re-telling the area's rich industrial and cultural history.
- October 22, lead-based paint abatement work begins in the Powerhouse. Abrasives will be used to remove the paint. The work should take about 4 weeks to complete.



Workers continue to build the Bypass Channel Berm. When the bypass channel is complete, the Clark Fork River will be re-routed through this clean channel, effectively isolating the contaminated sediments from the active river. The channel can withstand a 100-year flood.

PROJECT SCHEDULE

2007	Build haul roads Build flood berms I-90 bridge mitigation MRL bridge mitigation Build bypass channel Build pedestrian trail Construct rail lines Rail hauling sediment Stage 2 drawdown Build coffer dam Powerhouse removal
2008	Spillway removal Sediment removal Replace Hwy 200 bridge Replace walking bridge Restoration Redevelopment
2009	Sediment removal
2009	Restoration Redevelopment
2010	Restoration Redevelopment
2011	Restoration Redevelopment

Voluntary Speed Compliance (VSC) signs were installed last week in Bonner.

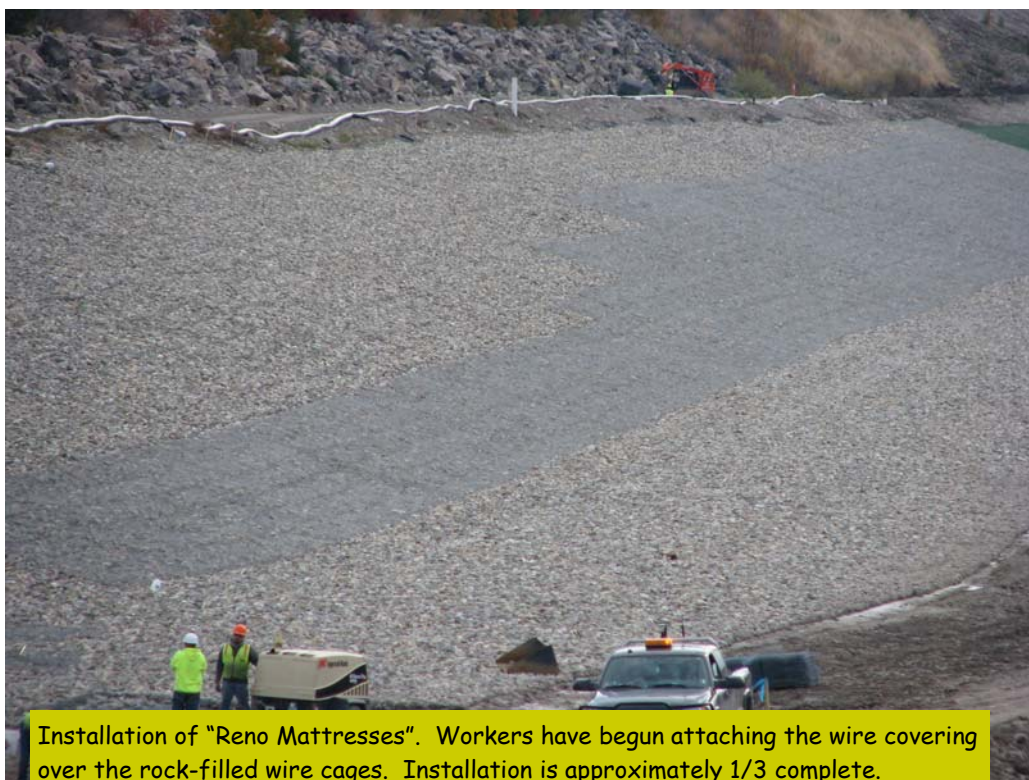


Local Well Inventory

EPA is implementing a pro-active program to identify and replace wells at risk of going dry because of the reservoir draw downs.

Over the next several weeks, Tony Berthelote will be contacting residents in the West Riverside, Pine Grove, and Piltzville areas.

If you live in one of these areas and are concerned about your well, please give Tony a call:
(406) 207-5856 (cell)



Installation of "Reno Mattresses". Workers have begun attaching the wire covering over the rock-filled wire cages. Installation is approximately 1/3 complete.