

SCALE: 4" = 1 MILE

Ed CREAM - T015
DENNIS SAIN - D7G

ATTACHMENT #1

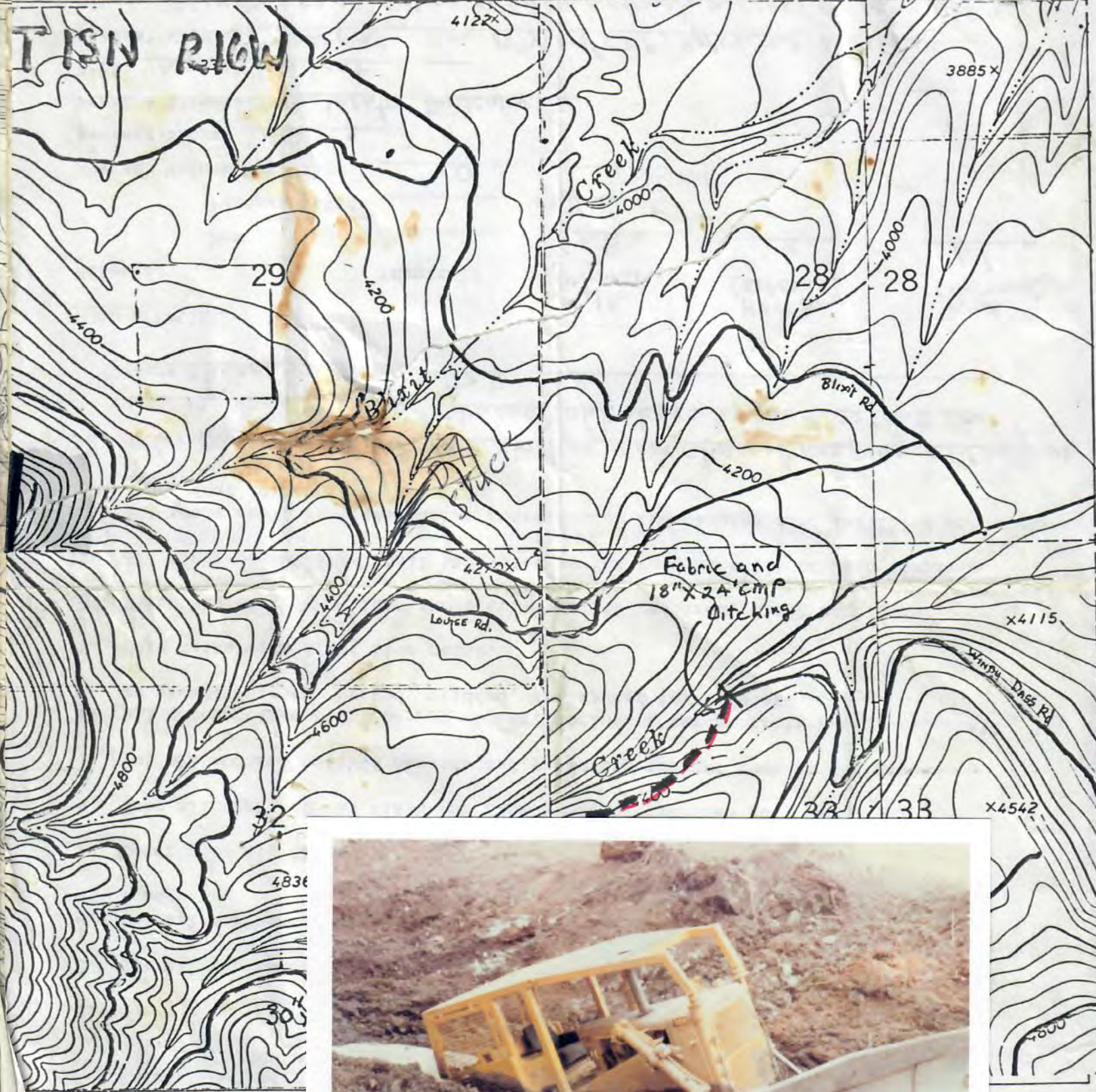
13 N DOZER
16 W

CONTRACTOR Company (McKay)

DATE Nov. 10, 1983

BLOCK # 13-83-2 R/W

ROAD NAME Hayes Road



EXI
ROA
ROA
CUL



MONTANA MEMORY PROJECT

WHERE MONTANA'S RICH PAST MEETS ITS PEOPLE



Artwork	Audio	Photographs	Print Materials	Contributors	Educational Resources	Browse Collections	Favorites Help
-------------------------	-----------------------	-----------------------------	---------------------------------	------------------------------	---------------------------------------	------------------------------------	--

Search

[Search](#) [Advanced Search](#) | [Browse](#)

Results
28 of 91

[Home](#) [Archival Photographs from the University of Montana](#) [Bonner, Montana](#)

[Reference URL](#)

[Share](#)

[Comment](#)

[Rate](#)

[Save to favorites](#)

Bonner, Montana

[View Description](#)

[Download](#)

[Print](#)



From Archives & Special Collections, Mansfield Library, The University of Montana-Mis

MONTANA MEMORY PROJECT

WHERE MONTANA'S RICH PAST MEETS ITS PEOPLE

Artwork Audio Photographs Print Materials Contributors Educational Resources

Search Search [Advanced Search](#) | [Browse](#)

Home [Archival Photographs from the University of Montana](#) Bonner Dam showing the mill and rafts of logs

Reference URL Share Comment Rate Save to favorites

Bonner Dam showing the mill and rafts of logs

[View Description](#)



From Archives & Special Collections, Mansfield Library, The University of Montana-Mis

Description

Title Bonner Dam showing the mill and rafts of logs
Description Bonner Dam showing the mill and rafts of logs on the Blackfoot River, Montana. Boos #40.
Creator Boos, Edward H.

MONTANA MEMORY PROJECT

WHERE MONTANA'S RICH PAST MEETS ITS PEOPLE



Artwork	Audio	Photographs	Print Materials	Contributors	Educational Resources	Browse Collections	Favorite Help
-------------------------	-----------------------	-----------------------------	---------------------------------	------------------------------	---------------------------------------	------------------------------------	---

Search [Search](#) [Advanced Search](#) | [Browse](#)

Results
16 of 91

[Home](#) [Archival Photographs from the University of Montana](#) Anaconda Copper Mining Company saw mill, Bonner

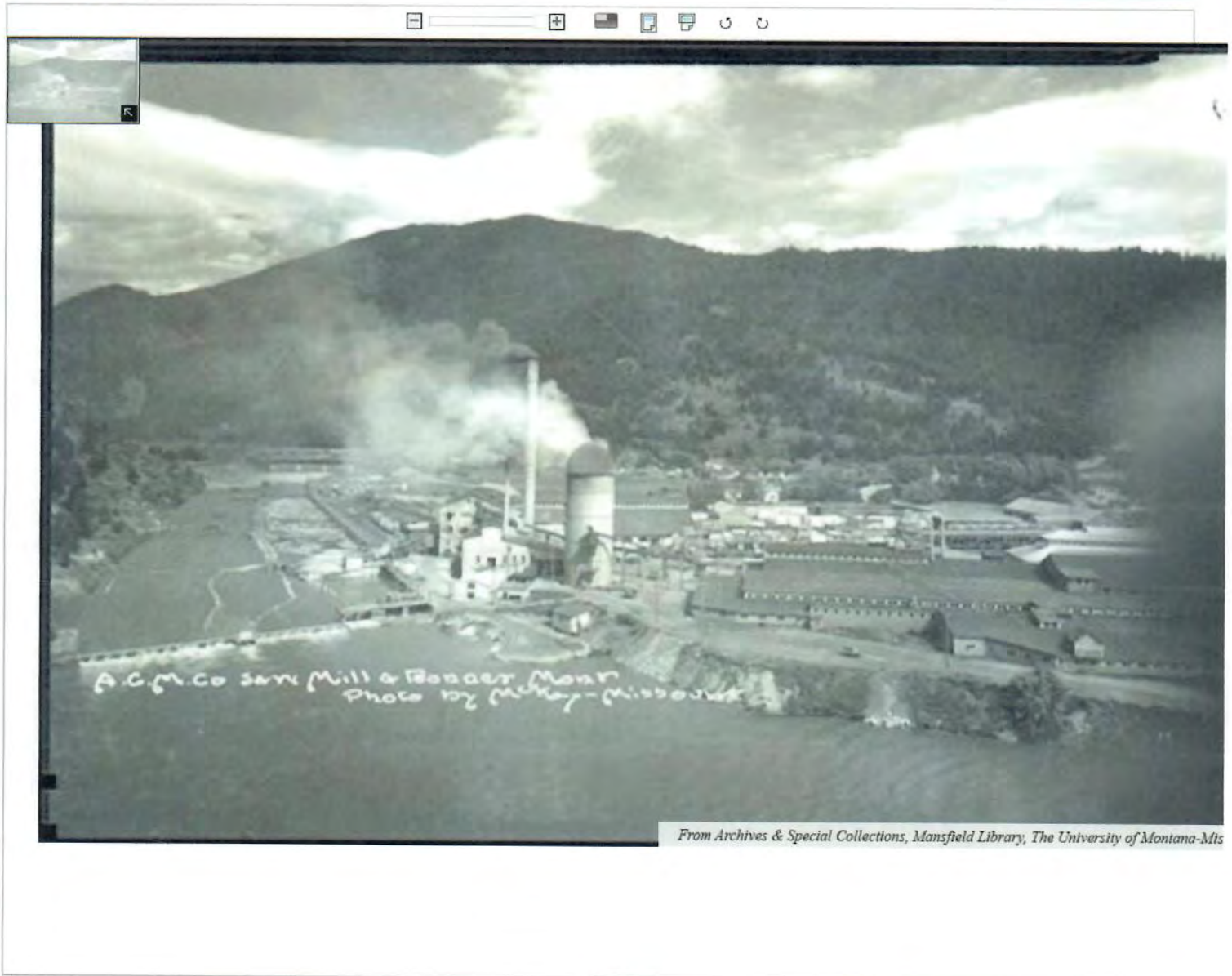
[Reference URL](#) [Share](#) [Comment](#) [Rate](#) [Save to favorites](#)

Anaconda Copper Mining Company saw mill, Bonner

[View Description](#)

[Download](#)

[Print](#)



Description

Title Anaconda Copper Mining Company saw mill, Bonner

Description Aerial view of the Anaconda Copper Mining Company saw mill, Bonner, Montana, and the Blackfoot River.

MONTANA MEMORY PROJECT

WHERE MONTANA'S RICH PAST MEETS ITS PEOPLE



- Artwork
- Audio
- Photographs
- Print Materials
- Contributors
- Educational Resources
- Browse Collections
- Favorites
- Help

Search [Advanced Search](#) | [Browse](#)

Results
15 of 91

[Home](#) > [Archival Photographs from the University of Montana](#) > Anaconda Copper Mining Company saw mill, Bonner

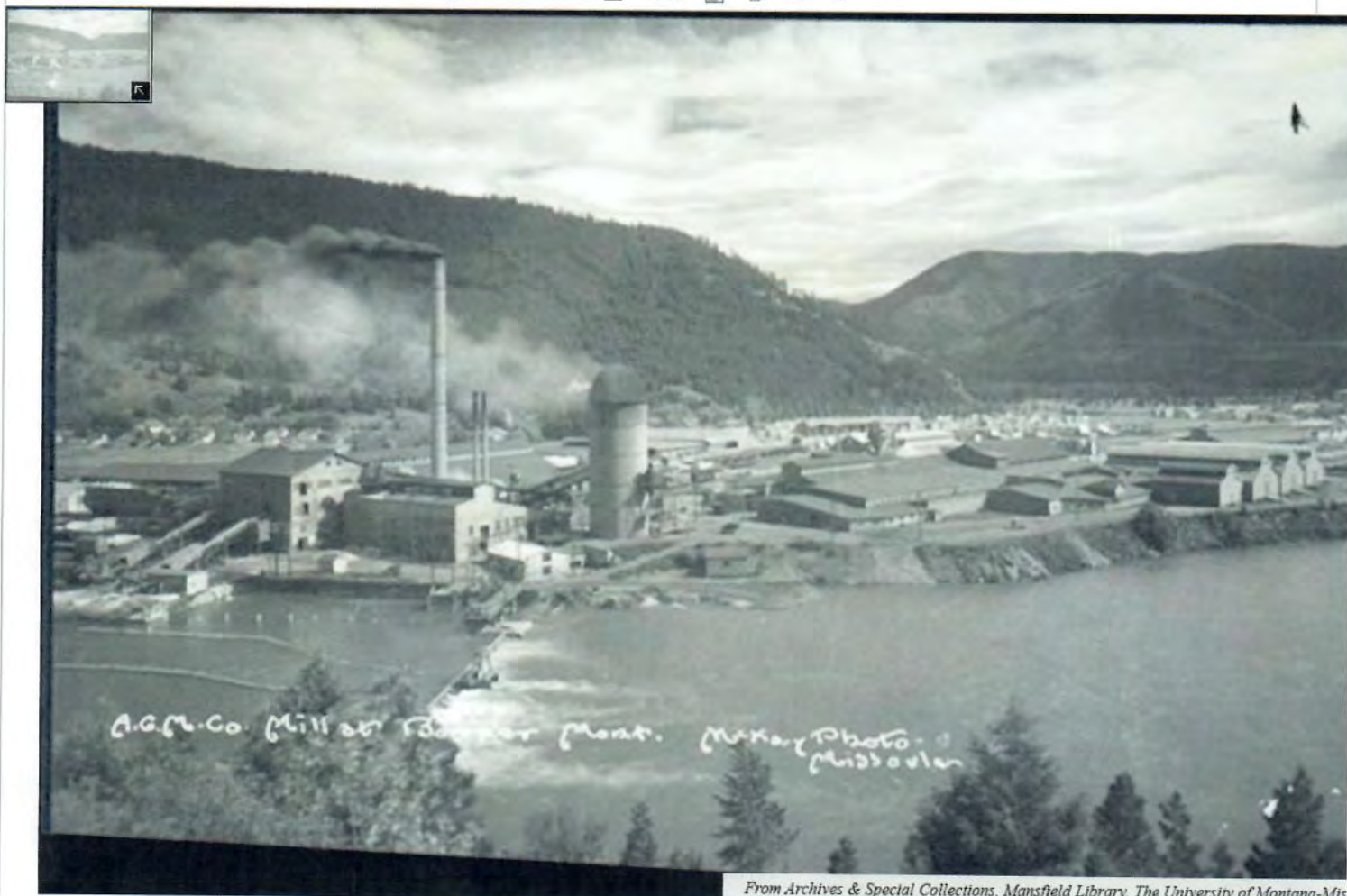
[Reference URL](#) [Share](#) [Comment](#) [Rate](#) [Save to favorites](#)

Anaconda Copper Mining Company saw mill, Bonner

[View Description](#)

[Download](#)

[Print](#)



From Archives & Special Collections, Mansfield Library, The University of Montana-Mis

MONTANA MEMORY PROJECT

WHERE MONTANA'S RICH PAST MEETS ITS PEOPLE



Artwork Audio Photographs Print Materials Contributors Educational Resources Browse Collections Favorites Help

Search Search [Advanced Search](#) | [Browse](#)

Results
62 of 91

Home [Archival Photographs from the University of Montana](#) Library car for the Blackfoot Valley lumber camps

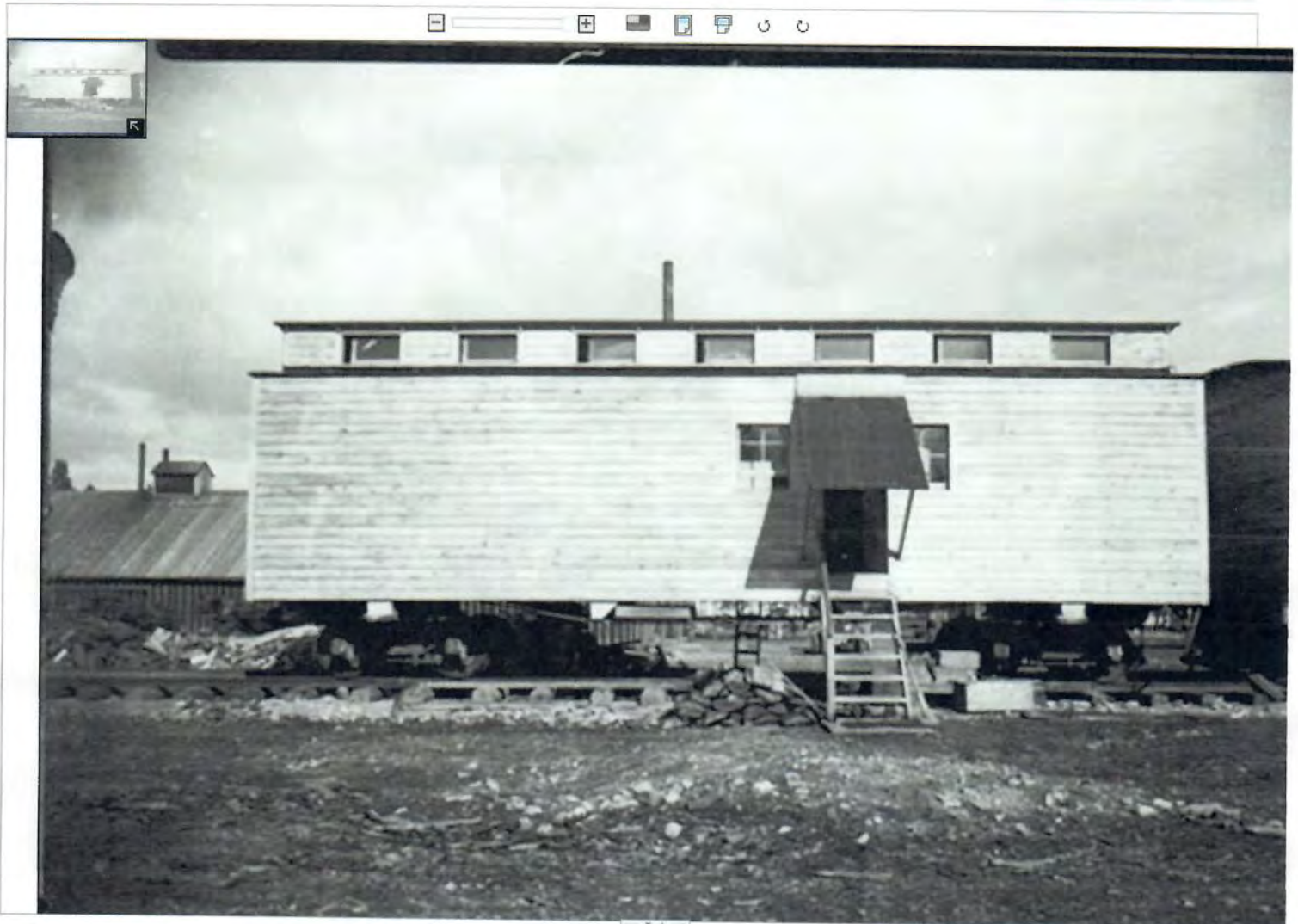
[Reference URL](#) [Share](#) [Comment](#) [Rate](#) [Save to favorites](#)

Library car for the Blackfoot Valley lumber camps

[View Description](#)

[Download](#)

[Print](#)



Description

Title	Library car for the Blackfoot Valley lumber camps
Description	Library car for the Blackfoot Valley Anaconda Copper Mining (ACM) lumber camps at Bonner, Montana.
Genre (Short List)	photographs
Type	Image;StillImage
Date Original	1899; 1900; 1901

MONTANA MEMORY PROJECT

WHERE MONTANA'S RICH PAST MEETS ITS PEOPLE



Artwork	Audio	Photographs	Print Materials	Contributors	Educational Resources	Browse Collections	Favorites	Help
-------------------------	-----------------------	-----------------------------	---------------------------------	------------------------------	---------------------------------------	------------------------------------	---------------------------	----------------------

Search [Advanced Search](#) | [Browse](#)

Results
59 of 91

[Home](#) > [Archival Photographs from the University of Montana](#) > Interior of railroad library car

[Reference URL](#) [Share](#) [Comment](#) [Rate](#) [Save to favorites](#)

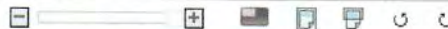
Interior of railroad library car

AL Henderson

[View Description](#)

[Download](#)

[Print](#)



From Archives & Special Collections, Mansfield Library, The University of Montana-Mts

Description

MONTANA MEMORY PROJECT

WHERE MONTANA'S RICH PAST MEETS ITS PEOPLE



Artwork	Audio	Photographs	Print Materials	Contributors	Educational Resources	Browse Collections	Favorite Help
---------	-------	-------------	-----------------	--------------	-----------------------	--------------------	-----------------

Search [Search](#) [Advanced Search](#) | [Browse](#)

Results
72 of 91

[Home](#) - [Archival Photographs from the University of Montana](#) - Ninemile near Stark, Montana, A.C.M. Co.

[Reference URL](#) [Share](#) [Comment](#) [Rate](#) [Save to favorites](#)

Ninemile near Stark, Montana, A.C.M. Co.

[View Description](#)

[Download](#)

[Print](#)



From Archives & Special Collections, Mansfield Library, The University of Montana-Mis

MONTANA MEMORY PROJECT

WHERE MONTANA'S RICH PAST MEETS ITS PEOPLE



Artwork	Audio	Photographs	Print Materials	Contributors	Educational Resources	Browse Collections	Favorites	Help
-------------------------	-----------------------	-----------------------------	---------------------------------	------------------------------	---------------------------------------	------------------------------------	---------------------------	----------------------

Search

[Advanced Search](#) | [Browse](#)

Results
7 of 91

[Home](#) - [Archival Photographs from the University of Montana](#) - A.C.M. Company's ranch, Potomac, Montana

[Reference URL](#) [Share](#) [Comment](#) [Rate](#) [Save to favorites](#)

A.C.M. Company's ranch, Potomac, Montana

[View Description](#)



From Archives & Special Collections, Mansfield Library, The University of Montana-Mts

MONTANA MEMORY PROJECT

WHERE MONTANA'S RICH PAST MEETS ITS PEOPLE



Artwork Audio Photographs Print Materials Contributors Educational Resources Browse Collections Favorites Help

Search

[Advanced Search](#) | [Browse](#)

Results
65 of 91

[Home](#) - [Archival Photographs from the University of Montana](#) - [Loggers eating a hot lunch, Woodworth](#)

[Reference URL](#) [Share](#) [Comment](#) [Rate](#) [Save to favorites](#)

Loggers eating a hot lunch, Woodworth

[View Description](#)

[Download](#)

[Print](#)



Description

Title	Loggers eating a hot lunch, Woodworth
Description	Image entitled 'A hot lunch.' Loggers sitting on logs and the ground eating lunch at Woodworth, Montana.
Genre (Short List)	photographs
Type	Image;StillImage
Date Original	1943
Subject (LCSH)	Loggers; Logging; Lumber trade
Subject (TGM)	Group portraits; People associated with manual labor; Lumber industry

MONTANA MEMORY PROJECT

WHERE MONTANA'S RICH PAST MEETS ITS PEOPLE



Artwork Audio Photographs Print Materials Contributors Educational Resources Browse Collections Favorites Help

Search Search [Advanced Search](#) | [Browse](#)

Results
18 of 91

[Home](#) - [Archival Photographs from the University of Montana](#) - Anaconda Copper Mining Company shay locomotive leaving the roundhouse

[Reference URL](#) [Share](#) [Comment](#) [Rate](#) [Save to favorites](#)

Anaconda Copper Mining Company shay locomotive leaving the roundhouse

[View Description](#)

[Download](#)

[Print](#)



Description

Title	Anaconda Copper Mining Company shay locomotive leaving the roundhouse
Description	Anaconda Copper Mining Company three-truck Shay #5, leaving roundhouse stall, in tow, Missoula, Montana.
Creator	Johnson, Philip C. (Philip Cornwell), 1907-1990
Genre (Short List)	photographs; photographs
Type	Image;StillImage; Image;StillImage
Date Original	1962-02

MONTANA MEMORY PROJECT

WHERE MONTANA'S RICH PAST MEETS ITS PEOPLE



Artwork	Audio	Photographs	Print Materials	Contributors	Educational Resources	Browse Collections	Favorites	Help
-------------------------	-----------------------	-----------------------------	---------------------------------	------------------------------	---------------------------------------	------------------------------------	---------------------------	----------------------

Search

[Search](#) [Advanced Search](#) | [Browse](#)

Results
26 of 91

[Home](#) [Archival Photographs from the University of Montana](#) [Bonner, Montana](#)

[Reference URL](#)

[Share](#)

[Comment](#)

[Rate](#)

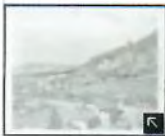
[Save to favorites](#)

Bonner, Montana

[View Description](#)

[Download](#)

[Print](#)



From Archives & Special Collections, Mansfield Library, The University of Montana-Mis

MONTANA MEMORY PROJECT

WHERE MONTANA'S RICH PAST MEETS ITS PEOPLE



Artwork	Audio	Photographs	Print Materials	Contributors	Educational Resources	Browse Collections	Privacy	Help
-------------------------	-----------------------	-----------------------------	---------------------------------	------------------------------	---------------------------------------	------------------------------------	-------------------------	----------------------

Search [Search](#) [Advanced Search](#) | [Browse](#)

Results
29 of 91

[Home](#) [Archival Photographs from the University of Montana](#) [Bonner, Montana](#)

[Reference URL](#) [Share](#) [Comment](#) [Rate](#) [Save to favorites](#)

Bonner, Montana

[View Description](#)

[Download](#) [Print](#)



From Archives & Special Collections, Mansfield Library, The University of Montana-Mis

MONTANA MEMORY PROJECT

WHERE MONTANA'S RICH PAST MEETS ITS PEOPLE



Artwork Audio Photographs Print Materials Contributors Educational Resources Browse Collections Favorites Help

Search Search [Advanced Search](#) | [Browse](#)

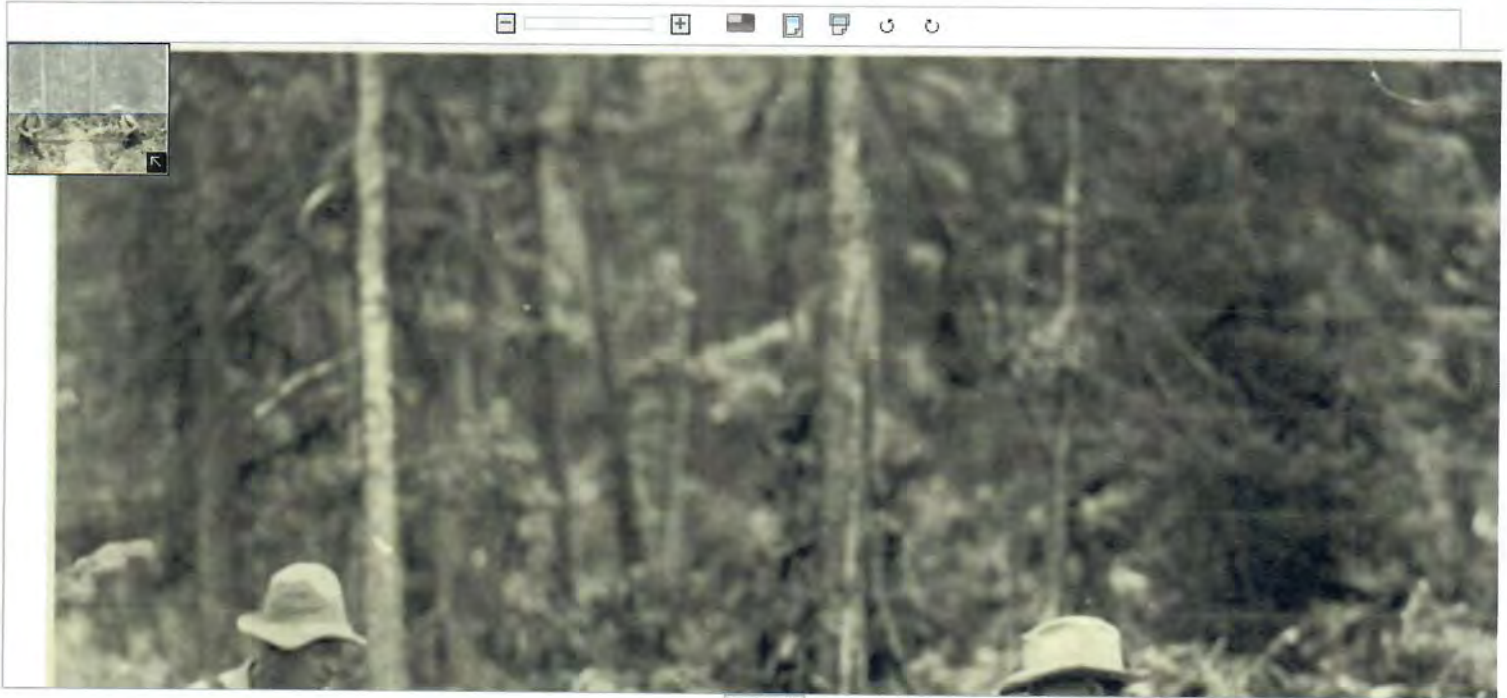
Home » [Archival Photographs from the University of Montana](#) » Bucking a fallen tree into logs

[Reference URL](#) [Share](#) [Comment](#) [Rate](#) [Save to favorites](#)

Bucking a fallen tree into logs

[View Description](#)

[Download](#) [Print](#)



Description

Title	Bucking a fallen tree into logs
Description	Henry Johnson and Ben Hallgreen 'bucking' a fallen tree into logs using a two man saw, Woodworth, Montana.
Genre (Short List)	photographs
Type	Image;StillImage
Date Original	1943
Subject (LCSH)	Loggers ; Crosscut saws
Subject (TGM)	Group portraits; People associated with manual labor; Lumber industry
Subject (Keyword)	Johnson, Henry; Hallgreen, Ben
Rights Management	This image may be protected by copyright. Permission may be required for use and/or reproductions. For further information please contact Archives and Special Collections at the University of Montana, Maureen and Mike Mansfield Library: http://www.lib.umt.edu/asc
Contributing Institution	University of Montana--Missoula, Mansfield Library
Geographic Coverage	Woodworth (Powell county, Montana)
Time Period Represented	20th century
Digital Collection	Archival Photographs from the University of Montana

MONTANA MEMORY PROJECT

WHERE MONTANA'S RICH PAST MEETS ITS PEOPLE

D 8 - 24

RAY BAIKY



- Artwork
- Audio
- Photographs
- Print Materials
- Contributors
- Educational Resources

Search [Advanced Search](#) | [Browse](#)

Home - Archival Photographs from the University of Montana - A.C.M. log camp, Woodworth

[Reference URL](#) [Share](#) [Comment](#) [Rate](#) [Save to favorites](#)

A.C.M. log camp, Woodworth

D7 CAT at Chamberlain Creek

[Download](#)

[Print](#)



From Archives & Special Collections, Mansfield Library, The University of Montana-Mis

MONTANA MEMORY PROJECT

WHERE MONTANA'S RICH PAST MEETS ITS PEOPLE



Artwork	Audio	Photographs	Print Materials	Contributors	Educational Resources	Browse Collections	Feedback	Help
-------------------------	-----------------------	-----------------------------	---------------------------------	------------------------------	---------------------------------------	------------------------------------	--------------------------	----------------------

Search

[Advanced Search](#) | [Browse](#)

Results
4 of 0

[Home](#) » [Archival Photographs from the University of Montana](#) » [A.C.M. camp 1, Woodworth](#)

[Reference URL](#)

[Share](#)

[Comment](#)

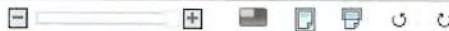
[Rate](#)

[Save to favorites](#)

A.C.M. camp 1, Woodworth

[View Description](#)

Joe Kingham, cook at Woodworth



From Archives & Special Collections, Mansfield Library, The University of Montana-Mt

MONTANA MEMORY PROJECT

WHERE MONTANA'S RICH PAST MEETS ITS PEOPLE



Artwork	Audio	Photographs	Print Materials	Contributors	Educational Resources	Browse Collections	Favorite	Help
---------	-------	-------------	-----------------	--------------	-----------------------	--------------------	----------	------

Search

[Advanced Search](#) | [Browse](#)

Results
3 of 0

[Home](#) - [Archival Photographs from the University of Montana](#) - A.C.M. camp 1 commissary, Woodworth

[Reference URL](#)

[Share](#)

[Comment](#)

[Rate](#)

[Save to favorites](#)

A.C.M. camp 1 commissary, Woodworth

D.L. Miller and Millard Woolen

[View Description](#)



From Archives & Special Collections, Mansfield Library, The University of Montana-Mts

MONTANA MEMORY PROJECT

WHERE MONTANA'S RICH PAST MEETS ITS PEOPLE



Artwork | Audio | Photographs | Print Materials | Contributors | Educational Resources | Browse Collections | Favorites | Help

Search

[Advanced Search](#) | [Browse](#)

Results
79 of 91

[Home](#) | [Archival Photographs from the University of Montana](#) | Reload operation, ACM lumbering

[Reference URL](#)

[Share](#)

[Comment](#)

[Rate](#)

[Save to favorites](#)

Reload operation, ACM lumbering

[View Description](#)



Description

Title Reload operation, ACM lumbering

MONTANA MEMORY PROJECT

WHERE MONTANA'S RICH PAST MEETS ITS PEOPLE



Artwork	Audio	Photographs	Print Materials	Contributors	Educational Resources	Browse Collections	Privacy	Help
-------------------------	-----------------------	-----------------------------	---------------------------------	------------------------------	---------------------------------------	------------------------------------	-------------------------	----------------------

Search

[Search](#) [Advanced Search](#) | [Browse](#)

Results
9 of 91

[Home](#) [Archival Photographs from the University of Montana](#) [A.C.M. logging operations](#)

[Reference URL](#)

[Share](#)

[Comment](#)

[Rate](#)

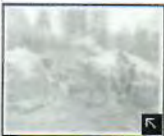
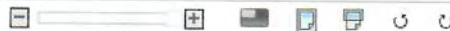
[Save to favorites](#)

A.C.M. logging operations

[View Description](#)

[Download](#)

[Print](#)



From Archives & Special Collections, Mansfield Library, The University of Montana-MtS

MONTANA MEMORY PROJECT

WHERE MONTANA'S RICH PAST MEETS ITS PEOPLE



Artwork Audio Photographs Print Materials Contributors Educational Resources Browse Collections Favorites Help

Search [Advanced Search](#) | [Browse](#)

Results
57 of 91

[Home](#) - [Archival Photographs from the University of Montana](#) - [Hauling logs to the railroad landing](#)

[Reference URL](#) [Share](#) [Comment](#) [Rate](#) [Save to favorites](#)

Hauling logs to the railroad landing

[View Description](#)

[Download](#)

[Print](#)



Description

Title	Hauling logs to the railroad landing
Description	Truck with logs on the way to the railroad landing, Woodworth, Montana.
Genre (Short List)	photographs
Type	Image;StillImage
Date Original	1942; 1943; 1944
Date (unknown or estimated)	Circa 1943
Subject (LCSH)	Logging trucks; Loggers; Log transportation

MONTANA MEMORY PROJECT

WHERE MONTANA'S RICH PAST MEETS ITS PEOPLE



Artwork | Audio | Photographs | Print Materials | Contributors | Educational Resources | Browse Collections | Favorites | Help

Search

[Advanced Search](#) | [Browse](#)

Results
6 of 91

[Home](#) - [Archival Photographs from the University of Montana](#) - [A.C.M. Company near Woodworth](#)

[Reference URL](#)

[Share](#)

[Comment](#)

[Rate](#)

[Save to favorites](#)

A.C.M. Company near Woodworth

[View Description](#)



From Archives & Special Collections, Mansfield Library, The University of Montana-Mis